



DIN 928 Weld Nuts

Leader-Fastener is a manufacturer and distributor of **DIN 928 Weld Nuts**. We have a complete line of service from having invested in production plants, export department and to having a quality control team and center to meet your requirements. We regard quality as the life of the company. We persist in good quality as the first policy and have established a set of quality control and inspection system according to the international standard. We have carried out ISO9001 Quality Guarantee System in every course of production, transportation and selling. We do hope we could be your partner in business by topping quality, knight service and

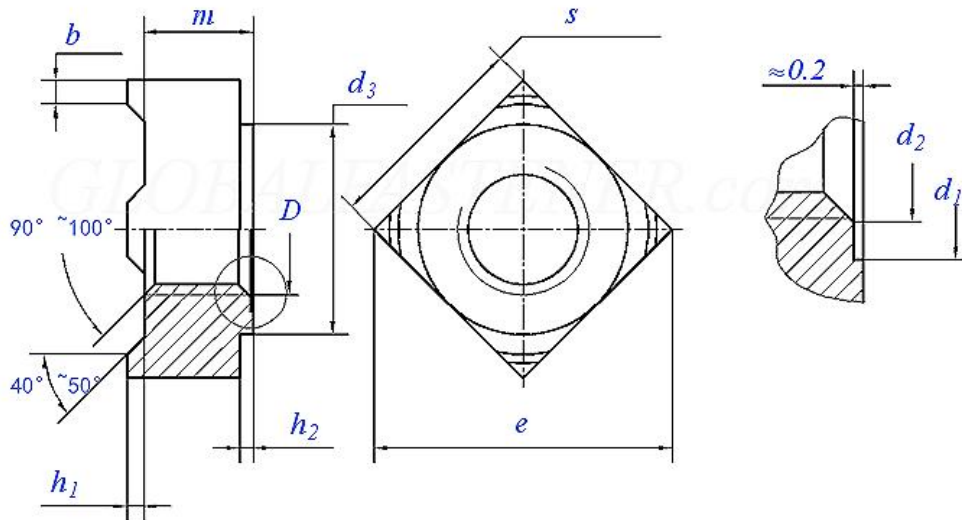
competitive price in the near future and be your friends as well.

The **DIN 928 weld nuts** is a non-piloted square nut with four uniform projections. The **Din 928 weld nut** is easily fixtured for rapid welding by a locator pin in the electrode. They are manufactured to DIN 928 Specifications, weight Per Thousand: 15 lbs. **DIN 928 Square Weld Nuts** are square nuts with internal machine screw threads and four weld projections, one at each corner. Supplied in plain finish (unplated without a rust inhibitor) steel and stainless steel. Thread tolerance is 6G; right-hand threads are standard. If a nut with three weld projections is a better fit for your application, consider DIN 929.

Product Specification of **DIN 928 Weld Nuts**

Material : Carbon steel, Stainless steel, Alloy Steel, Brass.

Finishment: Black, Zinc Plated, Zinc Yellow, HDG, Phosphate, DACROMET, Geomet, Magin, Ruspert, Teflon, etc.

DIN 928 - 2013 Square Weld Nuts


Thread Size		M4	M5	M6	M8	M10	7/16 ①	7/16 ①	M12	M14	M16
D											
P	Coarse Thread	0.7	0.8	1	1.25	1.5	/	/	1.75	2	2
	Fine Thread -1	/	/	/	1	1	/	/	1.25	1.5	1.5
	Fine Thread -2	/	/	/	/	1.25	20	20	1.5	-	-
b	Nominal size	0.8	1	1.2	1.5	1.8	1.8	2	2	2.5	2.5
	max	0.95	1.15	1.35	1.65	2	2	2.2	2.2	2.7	2.7
	min	0.65	0.85	1.05	1.35	1.6	1.6	1.8	1.8	2.3	2.3
d ₁	min=nominal size (H13)	5	6	7.5	10	12.5	12.5	13.5	13.5	16.8	18.8
	max	5.18	6.18	7.72	10.22	12.77	12.77	13.77	13.77	17.07	19.13
d ₂	max	4.2	5.25	6.3	8.4	10.5	11.7	11.7	12.6	14.7	16.8
d ₃	min	6.4	8.2	9.1	12.8	15.6	15.6	17.4	17.4	20.4	22.4
e	min	9	12	13	18	22	22	25	25	28	32
h ₁	Nominal Size	0.6	0.8	0.8	1	1.2	1.2	1.4	1.4	1.4	1.6
	max	0.7	0.9	0.9	1.1	1.3	1.3	1.5	1.5	1.5	1.7
	min	0.5	0.7	0.7	0.9	1.1	1.1	1.3	1.3	1.3	1.5
h ₂	min	0.4	0.6	0.7	1.1	1.25	1.25	1.75	1.75	1.75	2
	max	1.3	1.5	1.8	2	2.2	2.2	3	3	3.2	4
m	max=nominal size (h13)	3.5	4.2	5	6.5	8	9	9	9.5	11	13
	min	3.2	3.9	4.7	6.14	7.64	8.64	8.64	9.14	10.57	12.57

s	max=nominal size (h13)	7	9	10	14	17	17	19	19	22	24
	min	6.64	8.64	9.64	13.57	16.57	16.57	18.48	18.48	21.48	23.48
per 1000 units≈kg		0.81	1.7	2.4	6.5	11.3	12.5	16.5	16.5	26.7	35.8
Ensure the load(N)	Coarse Thread	6800	11000	15500	28300	44800	-	-	65300	89700	123000
	Fine Thread -1	-	-	-	30200	50200	-	-	72100	97500	132000
	Fine Thread -2	-	-	-	-	47800	53600	53600	68200	-	-